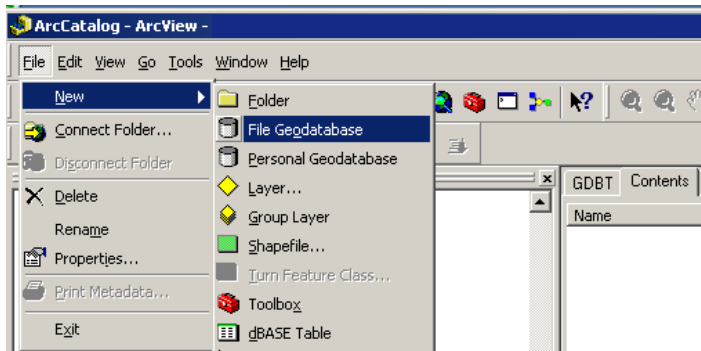


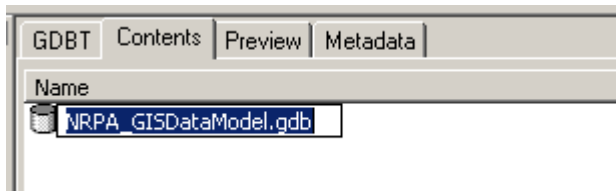
Converting from ESRI Personal Geodatabase to an ESRI File Geodatabase

The upcoming PRORAGIS application requires that any GIS data being loaded is stored in a File Geodatabase format (.gdb). The original NRPA data model was distributed as a Personal Geodatabase (.mdb), so users will need to follow the three steps below to convert their data.

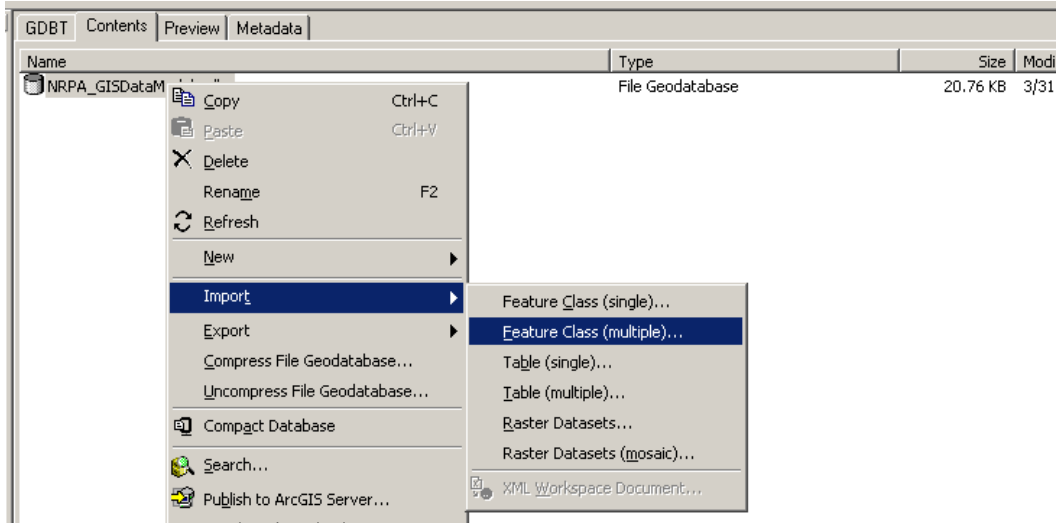
1. In ArcCatalog, navigate to the location you will be storing the File Geodatabase.
2. Click **File** → **New** → **File Geodatabase**



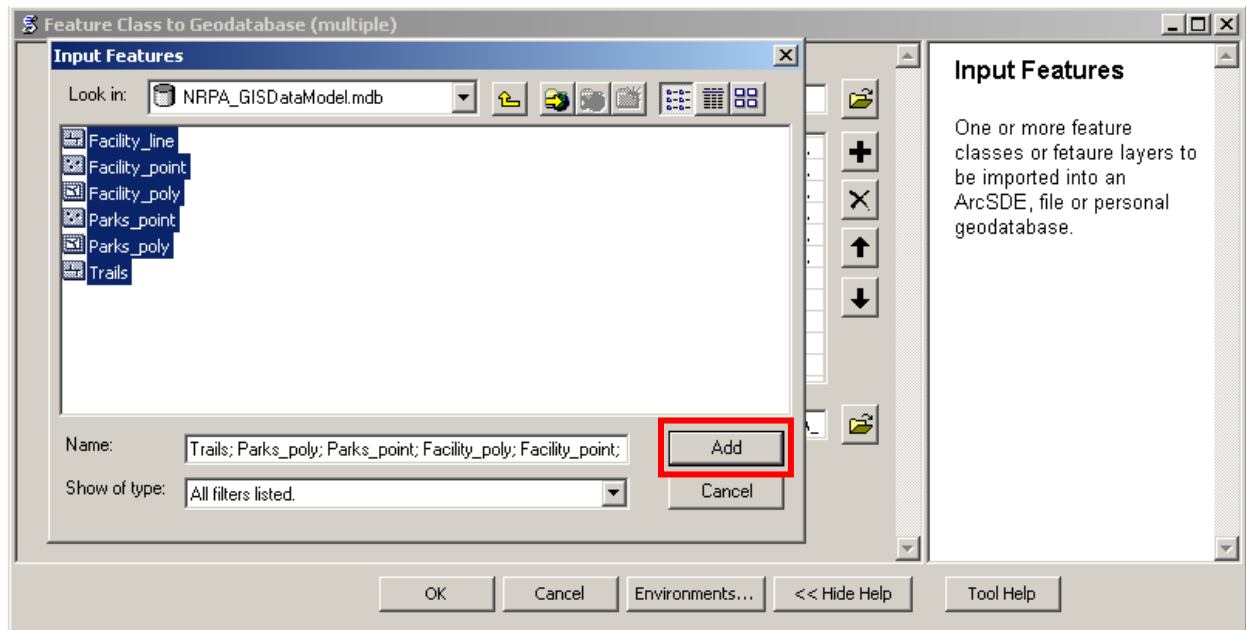
3. Name the New File Geodatabase. You can choose a name that suits your organization and your naming conventions.



4. Right-click on the new File Geodatabase and click **Import** → **Feature Class (multiple)**

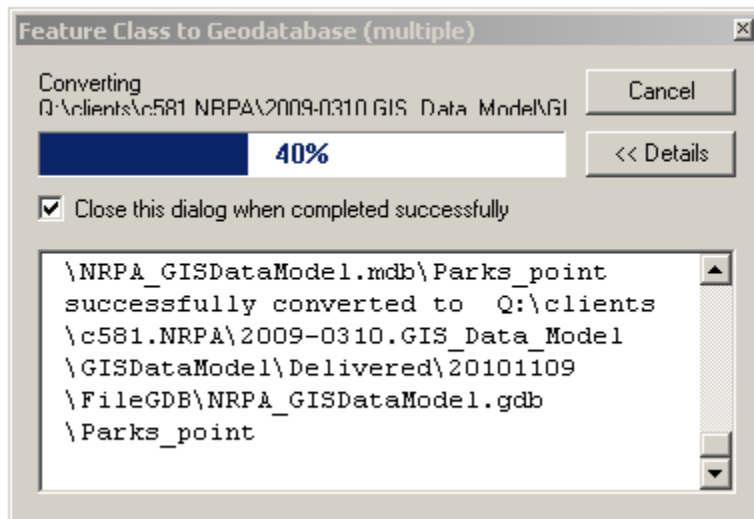


5. The **Feature Class to Geodatabase** dialog box will open. For the **Input Features**, navigate to your existing Personal Geodatabase (.mdb) file and highlight all feature classes. Click **Add**.



6. You will see the features classes listed in the Feature Class to Geodatabase dialog window. Click **OK**.

A progress dialog window will indicate the process is running



You should now be able to view your data in the new File Geodatabase (.gdb).